



# 1300CP SERIES BEER-CAVE DOORS



## Robust Reliability, Center Pull Beer Cave Self-Closing Door

- High thermal performance energy efficient frame construction
- Available in Normal Temp and High Humidity
- Standard Heavy Duty Hydraulic Door Closer
- Optional LED Lighting
- Commercial grade magnetic gaskets
- Front accessible raceway construction for ease of service

**CONTACT US:**

270.265.2520

[info@cisaplastusa.com](mailto:info@cisaplastusa.com)

[CisaplastUSA.com](http://CisaplastUSA.com)

**CALL NOW** to discuss  
your program needs.



# 1300CP SERIES

## BEER-CAVE DOORS

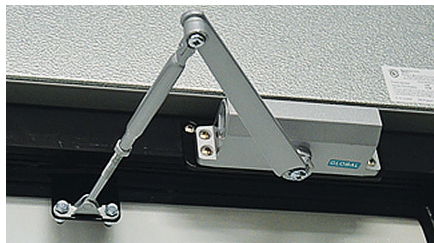
Built to match reach-in door lineups, these durable and attractive center pull Walk-In Entry Doors allow easy access to your walk-in cooler.

### APPLICATIONS

- Cooler / Beer Caves
- Walk-through access

### STANDARD FEATURES

- Heavy Duty Hydraulic Door Closer



- 1-1/4" Insulated Glass Unit
- Full Length Handle
- Satin Silver, Black, Bright Dip Silver
- Frame Threshold
- Adjustable Wiper Blades

### RELIABILITY FEATURES

- 500,000 cycle tested for wear
- 10-Year warranted Glass Seal

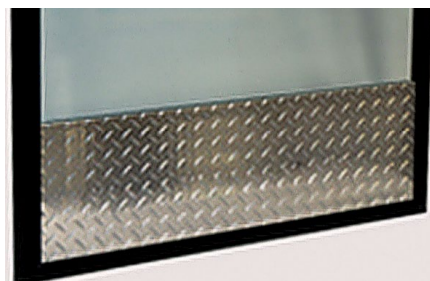


### WALK-IN ENTRY DOOR OPTIONS

- Post applied Elliptical or Service Mount Handles
- No Threshold
- LED Lighting
- Push Bar



- Stainless or Diamond Kick Plate



### WALK-IN ENTRY DOORS NET COOLER OPENINGS (NCO)

Door (W x H)	# Doors	# Frames	Net Cooler Opening (W x H)
60" x 81"	2	1	62-5/8" x 81-1/4"
72" x 81"	2	1	73-5/8" x 81-1/4"
72" x 84"	2	1	73-5/8" x 84-1/4"

### CONTACT US:

270.265.2520  
 info@cisaplastusa.com  
 CisaplastUSA.com